

Date:



## ENVIRONMENT & INNOVATION:

Theme 2007/2009

climate change:

let's save energy!

## Final Project Report

### Environment and Innovation

#### 1. Delegation Identification

<b>Country:</b>	Portugal
<b>Organisation:</b>	
<b>Project Name:</b>	Environment & Innovation - A project to promote schools' innovative environmental problem-solving By International Eco-Schools Programme (FEE) in partnership with Toyota Motor Europe
<b>Activity Name:</b>	
<b>Date:</b>	

#### 2. School Identification

<b>School Name / Group of Schools Name:</b>	E. B. 2,3 de Algoz
<b>Address:</b>	Rua das Quintas -8365 Algoz
<b>Region:</b>	Algarve
<b>Telephone:</b>	282570220
<b>Fax:</b>	282570229
<b>E-mail:</b>	eb23algoz.adm@clix.pt
<b>Website or Project website:</b>	www.azogla.com
<b>Contact person for this project:</b>	Daniel Carvalho
- Position in school	Professor de Ciências Naturais (Science teacher), Coordenador (Coordinator) e Director de Turma (Class Director) do Curso CEF Tipo II de Manutenção Hoteleira (Hotel Maintenance Course)
- Direct email	azulcombranco@gmail.com
- Direct telephone	963297923
<b>Type of school</b>	

**Date:**

<b>(kindergarten, primary, secondary, etc.):</b>	<b>Escola Básica 2.º e 3.º Ciclos</b>
<b>Age of students involved in the project:</b>	<b>14- 17</b>
<b>Number of students directly involved in the project:</b>	<b>23</b>
<b>Total of students in the School:</b>	<b>335</b>
<b>Number of staff/teachers directly involved in the Project:</b>	<b>8</b>
<b>Total of staff/teachers in the School:</b>	<b>44</b>
<b>Other participants involved (individuals and/or organizations) and the number of them:</b>	<p><b>Within the school</b> Secretaria da escola (School office)</p> <p><b>Outside the school</b> <b>Non-governmental organization:</b> Castelo de Sonhos, Silves.</p> <p><b>Local authorities / Municipality:</b> Junta de Freguesia de Algoz Câmara Municipal de Silves</p> <p><b>Other local organizations</b></p> <ul style="list-style-type: none"> <li>- Escola E B 2, 3 de Algoz</li> <li>- ALGAR</li> <li>- Águas do Algarve</li> <li>- MaxMat</li> <li>- Leite &amp; Correia, Engenharia e Construções, Lda.</li> <li>- Viga D'Ouro</li> <li>- Macive</li> <li>- Abel de Oliveira Carrasquinho</li> <li>- Soalgoz</li> <li>- Unibetão</li> <li>- Leroy Merlin</li> <li>- Barbot</li> <li>- Antero &amp; Neves, Lda</li> <li>- ChaminéArte</li> <li>- Marmoalgoz, Lda</li> <li>- Renováveis Séc. XXI</li> </ul>
<b>The other participants role:</b>	<b>Secretaria da escola (School office): collaboration in the administrative part of the process.</b> <b>Remaining entities: supply of the necessary materials.</b>
<b>Rural / Urban setting:</b>	<b>X rural</b> <input type="checkbox"/> <b>urban</b>
<b>Other relevant information:</b>	
<b>(maximum 100 words)</b>	

**3. Project Identification**

<b>Project Title</b>	"Aprender a Amar o planeta" (Learning How to Love the Planet)- Galeria Verde (Green Gallery)
<b>Project keywords</b>	Galeria Verde (Green Gallery)

**Date:**

<p><b>Project Summary</b>  (maximum 100 words)</p>	<p>This project involves the construction of a small Algarvian house in the school premises with an area of about 42m<sup>2</sup> (forty two square metres). Exhibitions on the work done by the pupils of the group of schools of Algoz as well as workshops and seminars on a wide range of everyday life subjects will take place there. The project is being developed by the students of a course on Hotel Maintenance. The construction and way of functioning of the gallery is based on principles of sustainable energy. Thus, the whole supply of electricity, both inside and outside of the small house, will be supported by the installation of photovoltaic panels.</p>
<p><b>Introduction and outline of the challenge addressed by your schools or group of schools.</b>  (Please submit a description of the problems that your project addressed. How was the situation prior to the project? )  (maximum 1 page)</p>	<p>Our project tries to solve the problem of excessive use of fossil fuel in energetic production. Therefore, the construction of this space is based on energetic sustainability principles, thus meeting the theme of the Educational Project of the group of schools of Algoz "Looking for a sustainable future". The high dependency on non-renewable energy sources makes their substitution for renewable, clean and environmentally harmless energy sources urgent. The problem assumes greater dimension since the excessive use of polluting fuel is, more and more, causing the planet's global warming, by increasing the greenhouse effect. Besides the ecologic and energy saving side, this project also has a pedagogical side, drawing the community's attention to the urgent need to resort to clean energy sources, saving energy and not depending on polluting fuel.</p>

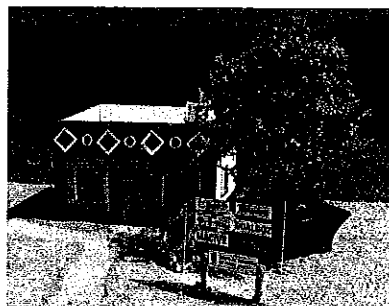
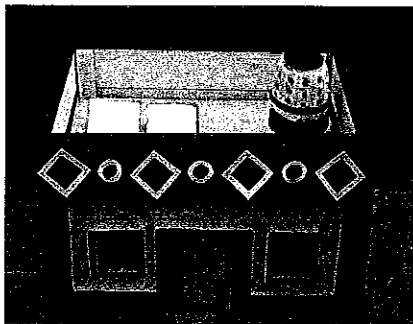
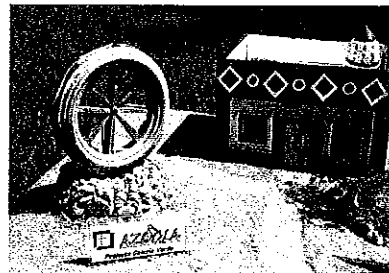
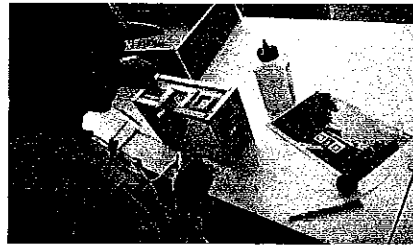
#### 4. Project Description

<p><b>Project description</b>  Please include also the following points: - Phases of the project; - Calendar/timing of the school project; - Financial information /</p>	<p><b>Phases of the project:</b></p> <p><b>1<sup>st</sup> Phase</b> – delineating the objectives and planning the construction activities for "Green Gallery", in a partnership between the teachers and pupils involved in the Project.</p> <p><b>2<sup>nd</sup> Phase</b> – studying the possible renewable energy sources to use in the Gallery in order to ensure its sustainability. Developing a project for collecting and reusing pluvial waters in the "Green Gallery".</p> <p><b>3<sup>rd</sup> Phase</b> – studying the architectural heritage of the typical Algarvian houses. Gathering decorative elements through photographic record.</p> <p><b>4<sup>th</sup> Phase</b> – developing a gallery sketch;</p>
--	---

**budget  
needed.**

**(maximum 2  
pages)**

**5<sup>th</sup> Phase** – construction of a gallery scale model.

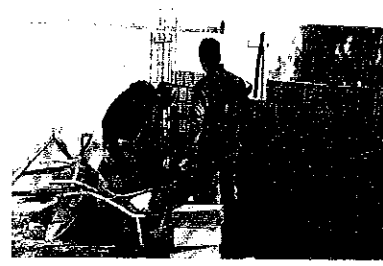


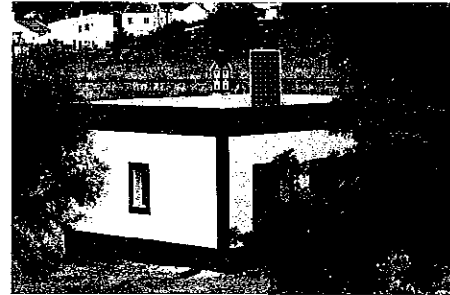
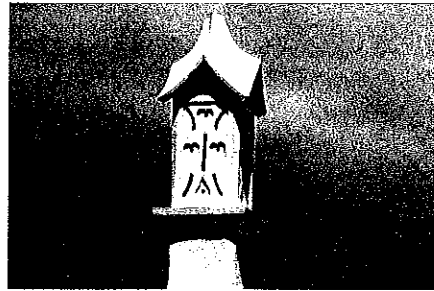
**6<sup>th</sup> Phase** – contacting public entities and regional companies, regarding the enlistment of partnerships for the project, concerning materials supplies, promotion of the project within the community, development of the concrete project and the list of materials and means of transport. These contacts were made through the teachers' and pupils' visits to the facilities of the different companies and public entities, as well as via e-mail, giving a detailed description of the project regarding its objectives and predicted results.

**7<sup>th</sup> Phase** – contacting the pupils' parents or tutors of the Parents' Association of the group of schools of Algoz, in order to ensure the presence of a parent who works in construction and who can superintend the construction of the gallery.

**8<sup>th</sup> Phase** – beginning the construction of the gallery.

1. Preparing the building site and receiving and storing the materials for the beginning of the construction.
2. Implementing the foundations and filling them with concrete.
3. Building the walls and wood framing for the pillars.
4. Splashing the walls.
5. Implementing the beams and semi-vaults for the later filling of the plate.
6. Placing pipes for the electrical wiring as well as for the water and sewerage systems.
7. Applying the plaster.
8. Applying the chimney.
9. Painting the exterior and interior walls of the gallery.
10. Installing the photovoltaic panels.
11. Creating the decorative elements (platbands).





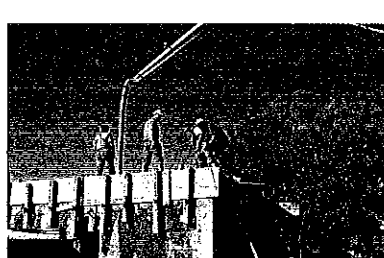
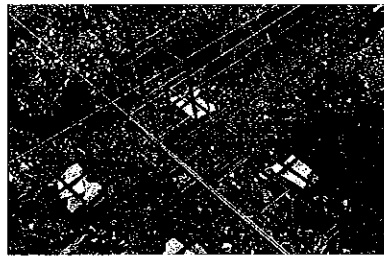
**9<sup>th</sup> Phase – Beginning the construction of the well.**

1. Sinking the pit.
2. Building the walls and waterproofing the well.
3. Covering the exterior walls of the well with limestone.
4. Connecting the pipes between the gallery and the well.
5. Installing the electric motor.

**10<sup>th</sup> Phase – Construction of a small storeroom of the same architectural design as the gallery, for the storage of the materials needed for the activities in the gallery.**

**Calendar of the project's phases**

<b>January 2008</b>	<b>1<sup>st</sup> Phase</b> – <i>delineating the objectives and planning the construction activities for "Green Gallery"</i>
	<b>2<sup>nd</sup> Phase</b> – <i>studying the possible renewable energy sources to use in the Gallery in order to ensure its sustainability. Developing a project for collecting and reusing pluvial waters in the "Green Gallery".</i>
<b>February 2008</b>	<b>3<sup>rd</sup> Phase</b> – <i>studying the architectural heritage of the typical Algarvian houses. Gathering of decorative elements through photographic record.</i>



**Date:**

		<b>4th Phase</b> – <i>development of a gallery sketch;</i>
		<b>5th Phase</b> – <i>construction of a gallery scale model.</i>
<b>February / March 2008</b>		<b>6th Phase</b> – <i>contacting public entities and regional companies</i>
<b>April 2008</b>		<b>7<sup>th</sup> Phase</b> – <i>contacting the pupils' parents or tutors of the Parents Association of the group of schools of Algoz</i>
		<b>8th Phase</b> – <i>beginning the construction of the gallery.</i>
<b>April de 2008</b>		1. Preparing the building site and receiving and storing the materials for the beginning of the construction.
<b>April / May 2008</b>		2. Building the walls and wood framing for the pillars.
<b>May 2008</b>		3. Splashing the walls and building the wood framing of the walls.
		4. Implementing the beams and semi-vaults for the later filling of the plate.
<b>October, November, December 2008</b>		5. Placing pipes for the electrical wiring as well as for the water and sewerage systems.
		6. Applying the plaster.
<b>January 2009</b>		7. Applying the chimney. 8. Painting the exterior and interior walls of the gallery.
<b>February / March 2009</b>		9. Placing the windowsills. 10. Applying weak concrete on the floor.
<b>April 2009</b>		11. Installing glazed bricks on the side windows.
<b>May 2009</b>		12. Installing the photovoltaic panels. 13. Creating the decorative elements (platbands).
		<b>9th Phase</b> – <i>Beginning the construction of the well.</i>
<b>June 2009</b>		1. Sinking the pit.

**Date:**

		<ol style="list-style-type: none"> <li>2. Building the walls and waterproofing the well.</li> <li>3. Covering the exterior walls of the well with limestone.</li> </ol>
	<b>June 2009</b>	4. Connecting the pipes between the gallery and the well.
	<b>July 2009</b>	5. Installing the electric motor.
	<b>September 2009</b>	<b>10<sup>th</sup> Phase</b> – <i>Construction of a small storeroom.</i>
	<b>October 2009</b>	<b>11<sup>th</sup> Phase</b> – <i>Inauguration of the Gallery. (prediction)</i>

## 5. Project Implementation

<p><b>Project Implementation:</b></p> <p><b>Please include also the following points:</b></p> <p><b>Innovation:</b>  <b>How was your project was innovative and unique in solving the problem or challenge mentioned?</b></p> <p><b>. Implementation outcome- Which were the results obtained? What are the major differences between before and after implementation of your project?</b></p> <p><b>Teamwork</b>  <b>Did your project involve a wide range</b></p>	<p>This is an innovative project in which pupils and teachers took the initiative of building a project which will contribute for a sustainable future. It is important to mention that when we started planning this project, we didn't have any materials or capital for its fulfilment, they were achieved through contacts established by teachers and pupils with public and private entities of our municipality and adjacent municipalities. Besides all the initiatives related to environmental concerns taking place at our school, this is an ambitious and innovative project which will contribute for a better sustainable resource management.</p> <p>All the electric energy supply is provided by the installation of photovoltaic panels, thus ensuring the necessary energy for the illumination of the interior, as well as the exterior, of the gallery. At the same time, some of the electric energy may be used to supply part of the school. In this way, a brief comparative study may take place; concerning the energy saving achieved, so as to raise the pupils and community's awareness to the advantages of the use of clean, renewable energies.</p> <p>Another detail of the project "Green Gallery" is that it is supposed to be an example of energetic efficiency, regarding the correct decrease of heat transfers between the inside and the outside, thus reducing the power consumption for the gallery's air conditioning. In this way, details such as the solar orientation of the gallery, as well as its correct insulation, will be taken into account. It is important to mention that the collaboration of an engineering office is expected, regarding the execution of the project in which concerns the concrete and the thermal insulation.</p> <p>This project also takes into consideration worries concerning water resources saving, by reusing rain water inside the gallery and in the</p>
---	--

**of stakeholders?  
Who/what  
organisations were  
involved in what?  
Did your project  
create or improve  
teamwork? .**

watering of some plants on the small Mediterranean Grove.

Another aspect contemplated on this project is that of preserving the traditional Algarvian architectural layout, which means that the gallery will show details concerning decorative elements such as colourful platbands, an Algarvian chimney (purely decorative), a door with a hatch, white painted walls, roof tiles, etc. The "Green Gallery" will be whitewashed, this being the exterior painting. Inside, diverse materials will be used, according to the principles which guide the 4Rs rule (reduce, reuse, recycle and recover), such as paper and cardboard, glass, cork, etc.

Whereas we are involved in the project "Green Gallery", the pupils of the course of Hotel Maintenance are developing the project "Mediterranean Grove", which consists on a garden in which several typically Algarvian plant species have been planted with the prospect of using the water resources correctly and of promoting and preserving the region's typical flora. This grove will constitute the surrounding area for the Green Gallery.

When the project is finished, a monitoring of the results will be made through the energetic receipts, as to compare the school's energetic expense before and after the construction of the "Green Gallery", bearing in mind that the energy it produces and transforms will be used on other places at the school.

The participation of the pupils, of the promoting class, is remarkable in promoting the project within the school as well as in the community, through the families and the council. Also, the message they insisted on passing to the Eco-Schools Committee was fundamental for the promotion of this project. Much of the work was done during weekends, which allowed the participation of Parents and Tutors, Teachers, School Caretakers, besides the pupils.

We should emphasise that the pupils' enthusiasm has often spread to the people in charge of the partnership companies, thus increasing their subvention, namely regarding the company which provided the photovoltaic panels, which eventually gave us a solar water heating panel.

#### **The people and organizations involved in the project:**

##### **Teachers:**

Carlos Nascimento, Daniel Carvalho, Joaquim Prates, Hélder Vasco Henriques, Estela Sousa, Homero Costa and Ana Cardoso.

**Task:** Coordinating the work developed by the pupils, contacting public and private entities as to gather partners and sponsors for the project.

##### **Pupils:**

Daniel Bantock, David Silvestre, Fábio Mendes, Félix Vilaça, Gonçalo Brás, Nuno Duarte, Miguel Barreto, Ricardo Coelho, Valdemar Santos, André Caldeira, Hélder Fernandes, João Sá, João Martins, Jorge Sacramento, Ludgero Rodrigues, Nelson Cristina, Nelson Colaço, Pedro Rodrigues, Ricardo Vieira, Ricardo Brás, Rui Colaço, Ayoub Mezni e João Faria.

**Task:** Co-participating in the making of the Project and in the development of the activities, namely in building the "Green Gallery", as a means to apply the topics taught during the subjects which compose the Technological Component of the course they attend.

**Parents and tutors:**

António Silva  
Laura Colaço

**Task:** Actively participating in the building of the "Green Gallery" and guiding the pupils, in accordance to their Professional activities in the building industry.

**Organizations****Non-governmental organizations:****Castelo de Sonhos, Silves.**

Partnership regarding financial support, coming from the profits gained by the ecologic features in the "Green Gallery".

**Fundação Jack Petchey**

Partnership regarding financial support.

**Local Authorities/Municipality**

**Junta de Freguesia de Algoz** – Human resources and means of transport, to pick up materials given by local companies.

**Câmara Municipal de Silves** – Establishment of a Protocol with Câmara Municipal de Silves for the Gallery usage with workshops related to the separation, reuse and recycling of materials, as well as the development of activities that aim the promotion of correct habits of preservation and protection of the natural resources and ecosystems.

These activities will be developed by specialized technicians from Câmara Municipal de Silves and orientated to students of the group of schools of Algoz and their parents and tutors.

**Other Local Organisations**

- **Escola E.B. 2, 3 de Algoz** with the lunches given to the people involved in the project, on Saturdays.

**- ALGAR**

Protocol with Algar, aiming the transportation of the technicians of this company to participate in the activities related with the correct separation of the waste produced in the school.

**- Algarvian Waters**

Protocol with the Algarvian Water Company, in order to organize activities that contribute for a correct management of hydraulic resources in the school, as well as the water quality control stored in the tank, and that supplies the Green Gallery.

- **MaxMat**, with the supply of cement bricks. This company has asked for the school data in order to register it in the Belmiro de Azevedo Foundation.

- **Leite & Correia, Engenharia e Construções, Lda.**, with the elaboration of the concrete project and wallmate supplies for the walls covering;

- **Viga D'Ouro**, with the bricks supplies;

- **Macive**, with the sand and wallmate supplies;

- **Abel de Oliveira Carrasquinho**, with the gravel supplies for the pillars fulfilment;

- **Soalgoz**, with the supply of girders and vaults for the plate;

<p><b>Effectiveness – How effectively was your project implemented? Was your project implemented within the planned budget? If not, how did you compensate? Please attach a financial report (expense breakdown)</b></p> <p><b>Was your project implemented according to the planned time schedule? If delayed, why?</b></p> <p><b>Environmental and societal impact - Which were the benefits to the environment, or the local community?</b></p>	<ul style="list-style-type: none"> <li>- <b>Unibetão</b>, with the supply of concrete for the plate fulfilment;</li> <li>- <b>Leroy Merlin e Barbot</b>, with the paint supplies;</li> <li>- <b>Antero &amp; Neves, Lda</b>, with the pavement supply;</li> <li>- <b>ChaminéArte</b>, with the chimney supply;</li> <li>- <b>Marmoalgoz, Lda</b> with the supplies of stones for the windowsills;</li> <li>- <b>Renováveis Séc. XXI</b> , with the supply of the Photovoltaic panels.</li> </ul> <p>The Project is being implemented according to the predicted budget. There's an annex attached to the report with the expenses done till the moment.</p> <p>The delay in the initial plan was essentially due to the difficulty in receiving materials from some partners, in the settled date, mainly due to the economical crisis. On the other hand, the same economical crisis has made it difficult to raise some funds/ supports, then the companies have shown themselves less available.</p> <p>This is a project which had a big impact among the entire local and school community and it is essential for each one of us to realize the importance of worrying about the environment. The entire school community will benefit, in some way, with the Green Gallery project. The students will have a space, open to the entire community, where they will have the opportunity to exhibit their works. The teachers, won't have to worry about the place where they will exhibit their students' works, and at the same time they will have a place where they can participate and even organize workshops, mainly focused on good practice concerning the sustainable resources management. These workshops aim pre-school pupils (<i>pre-escolar</i> - ages till 5), primary school pupils (<i>primeiro ciclo</i> – ages from 6 to 9) and <i>segundo ciclo</i> school pupils (ages 10-11), in order to call their attention for the need of preserving the environment and rational use of resources.</p>
--	--

<p><b>. How can this project be used by other Eco-Schools? Any advise to schools which would be interested in implementing a similar project?</b></p>	<p>This Project can be implemented by other eco-schools, once it lays on energetic sustainability principles and besides fighting against the dependency on fossil fuels it will allow schools to diminish the energetic bill and water consumption.</p>
<p><b>. How sustainable is the solution found? How will it be maintained in the future?</b></p>	<p>The Green Gallery will be self sufficient on the necessary resources to its sustainability. For that, it will have photovoltaic panels for energy production, a solar oven and a tank to collect rain water that will later be reused. In what the maintenance of the project is concerned, it will not imply significant costs on human and material resources, since it will be done by the pupils of the Hotel Maintenance Courses of the school. Therefore they will be responsible for the maintenance and conservation of the building, the painting, plumbing, electric wiring, maintenance of the photovoltaic panels and the surrounding areas such as gardens and Mediterranean grove. As for durability, this is a project which after finished can be used for an undetermined amount of time.</p>
<p><b>. What were the main difficulties found during the implementation process?</b></p>	<p>The main difficulties felt rely on the fact that some of the partnerships, due to the economical crisis, haven't delivered the materials on time. The weather conditions were also a setback on the planned schedule because the winter was rather rainy.</p>
<p><b>You may annex illustrations, maps, charts, etc..</b></p> <p><b>(maximum 4 pages)</b></p>	<p>It's also important to mention that there was articulation among the subjects of this course. On the other hand there was a connection to the scientific topics.</p>

## 6. Dissemination Strategy

<p><b>Dissemination Strategy:</b></p> <p><b>Please include also the following points:</b></p> <ul style="list-style-type: none"> <li><b>. How was the project communicated to the wider community?</b></li> <li><b>. Which means of communication did you use?</b></li> <li><b>. What was the communication /disseminations plan?</b></li> <li><b>. Were there any training actions?</b></li> </ul> <p><b>(maximum 1 page)</b></p>	<p>The dissemination of the project began at the Eco-schools Committee and with class talks. Besides that the project has been promoted on Educational Forums in the Municipality of Silves, as well as on regional talks for good practice dissemination.</p> <p>By the end of the school year, we will proceed to the promotion within the school community, parents and tutors, and local population, at the feast the school usually organizes in the end of the third term. The promotion throughout the</p>
--	---

**Date:**

region will be done with the help of a local radio. Another way of promoting the project will consist on exhibitions held at the Green Gallery. The project is currently being disseminated at the Eco-schools network through its blog. We also intend to promote it nationally and have already established contact with SIC a national television broadcaster, which showed interest in becoming a partner at this level of promotion.

**Signature/name of the project responsible:**

**Place:** Algorz

**Date:** 08/06/2009

*D. J. P. de Holanda Carullo*



## Relatório Financeiro

### Projecto "Galeria Verde"

Desde o início deste projecto o orçamento existente tornou-se muito importante para a sua gestão, de forma a nunca se inviabilizar qualquer fase do mesmo. Tendo consciência que os alunos conseguiram obter muitos parceiros, que financiaram muitos dos materiais, desde logo se tomou a decisão de canalizar a maior fatia das verbas do projecto para a aquisição do equipamento foto voltaico, recorrendo a esta verba somente quando não conseguíssemos os materiais através das parcerias.

Tendo em conta o atrás exposto abaixo se descrevem os valores já gastos e o que se pretende gastar. Para além da verba inicial de 2345 Euros – Ambiente e Inovação, afectamos ao projecto os 1000 Euros ganhos com a maqueta da Galeria Verde.

Total de Verba disponível – 3345 Euros		
Orçamento da instalação e compra de painéis fotovoltaicos (1)	2946.72 €	Pago já 50% aquando da adjudicação 1500 € (2)
Tijolos de vidro e material para aplicar (3)	41.87€	41.87€
Malha sol (4)	85.5€	85.5€
Vigotas e areia de areeiro(5)	104.08€	104.08€
Cimento e Reboco (6)	85.56€	85.56€
Cimento, Reboco e Areia (7)	179.76€	179.76€
	<b>Total gasto</b>	<b>1996.77€</b>

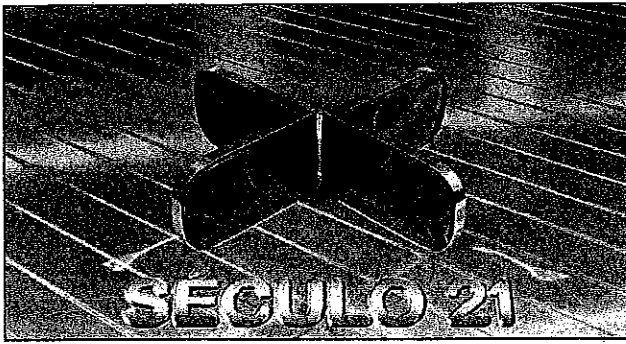
Total de Verba disponível ainda por gastar – 3345€ – 1996,77€ = 1348,23€	
1348,23€ + 1005€ (30% do projecto) = 2353,23€	
Restantes 50% dos painéis fotovoltaicos	1446,72€
Candeeiros exterior	350€
Bomba para puxar água cisterna	350€
Arranjos exteriores e caixas para guardar as baterias	206.51€

O Conselho Administrativo

(Carlos José Dias Ferreira da Silva)

O Coordenador do Projecto

(Daniel Carvalho)



# RENOVÁVEIS SÉC. XXI

Escola Algoz

11 Maio de 09

Orçamento n° 0001 110509

Qta	Descrição	Preço Unitário	Preço total
1	Painel fotovoltaico 270W	973 €	973 €
1	Estrutura de suporte	150 €	150 €
1	Regulador carga solar	325 €	325 €
2	Bateria de 300 Ah	390 €	780 €
1	Cabos eléctricos e acessórios de ligação	115 €	115 €
4	Balaústres electrónicos 40 W	33 €	132 €
4	Armaduras estanques	32 €	128 €
4	Lâmpadas 120-40 W	7 €	28 €
		Total	2 631 €

*Obs. Aos valores acima referidos acresce IVA à taxa em vigor (12%) e o orçamento tem a validade de 20 dias após a data de entrega do mesmo.*

Renováveis Sec. XXI  
Unipessoal, da  
A Gerência

21.05.2009



# Documento de Adjudicação

Declara a empresa Renováveis Século XXI que recebeu  
junto de

AGU PARCOTO VERTICAL ESCOLAS ALBOZ/EB 2,3 ALBOZ

a quantia que adjudica a obra que consiste na instalação  
de 1500€ (mil e quinhentos €) referente ao

orçamento com o numero 0001 110509

esta importância foi recebida pelo funcionário

Rui Clemente Velazquez Pereira Rodrigues (BI 8905998), em

TRANSFERÊNCIA BANCÁRIA A EFECTUAR PARA A CONTA 00352051007452330

o prazo de conclusão da referida obra é até ao dia

31 MAIO

RENOVÁVEIS SÉCULO XXI

R. Nossa S...  
8200 - 44...  
NIPC: 508 957 7...

NO BANCO CAIXA GERAL de Lisboa,  
BALCA ARIAS S. DA ALBUFERIA C/O  
N.I.B 00350510000745233068

Renováveis Século XXI Unipessoal Lda , Rua Nossa Senhora da Guia ,  
nº24 , 8200 Guia , contribuinte nº 508957770 , matriculada na  
Conservatória do reg.Predial de Loulé  
Deutsche Bank NIB 0043.0001.04001016216.43

ORIGINAL

TAVAGUEIRA, a 16 Maio 2009

BCM BRICOLAGE  
EN 125, KM 68 - TAVAGUEIRA - GUIA  
8200-856 ALBUFEIRA

Tel: 289 560 500 - Fax: 289 560 516  
OS ARTIGOS FACTURADOS FORAM COLOCADOS  
À DISPOSIÇÃO DO ADQUIRENTE NESTA DATA  
PROCESSADO POR COMPUTADOR

ALGOZ AGRU ESC.ALGOZ

RUA DAS QUINTAS  
0836- ALGOZ

Numero CIF/NIF : 600080374  
Telefone : 282570220

Data de venda : 16/05/2009  
Condições de pagamento : Preço ao contado sem desconto.  
Condições de venda : mencionadas sobre o documento  
Factura No : 000015 007 0622 - Venda -

Pag. 1/1

Numero	Designação e Referencia artigo	Quant.	Unidade	Prec unid. SI (EUR)	Desco. unid. SI (EUR)	Total SI (EUR)	Taxa IVA	Preço unidade (EUR)	Importancia C/IVA (EUR)
1	SEPARADOR BLOCOS VIDRO SEM BOLSA 10491922	6	UNID.	0.46		2.75	20.00	0.55	3.30
2	SEPARADOR "T" PERIMETRAL BLOCOS VIDRO 10520223	8	UNID.	0.38		3.07	20.00	0.46	3.68
3	*WEBER.TEC GLASS- 13440504	1	UNID.	6.88		6.88	20.00	8.25	8.25
4	*BLOCO VIDRO 19X19X8 OND NEUTRO BASIC 13729254	18	UNID.	1.23		22.20	20.00	1.48	26.64

**Agrupamento Vertical Escolas de Algoz**

Ano: 2009 Débito Crédito: 023/026212133

Registo	N.º Doc	Data	Rúbrica
Diário de Facturas	745	18/05/09	M/PL
C/Correntes	864en		
F. Cofre			
Caixa			
Trsf.º Banc.			11
Chèque			

O Conselho Administrativo: Presidente, Vice Presidente, Secretário

Modos de pag

CARTAO (EUR) : 41.87

Taxa IVA	Total SI (EUR)	Total IVA (EUR)	Tot. C/IVA (EUR)
20.00	34.90 EUR	6.97 EUR	41.87 EUR
EUR	34.90	6.97	41.87 ✓

Processado por computador

Exemplar cliente

BCM - BRICOLAGE S.A., EN 125, KM 68 - TAVAGUEIRA - GUIA - 8200-856 ALBUFEIRA  
NIPC 506848558 CRC Lisboa No 12410 Cap. Soc.: 1 500 000 Eur, Num Reg: PT000680

# ANTERO & NEVES, UNIPESSOAL, LDA.

MATERIAIS DE CONSTRUÇÃO CIVIL

TELEF: 282 57 51 26 - FAX: 282 57 49 53  
ESTRADA DA AMOREIRA - APARTADO 42  
8365-907 ALGOZ

CONTRIBUINTE N.º 500 992 061  
CONS. REGISTO COM. DE SILVES SOB N.º 493  
CAPITAL SOCIAL: 29.927,88 €



AGRUPAMENTOS ESCOLAS DO ALGOZ

ALGOZ  
ALGOZ  
8365 ARMAÇÃO DE PERA

DOCUMENTO  
FACTURA

Pag. : 1

Local de Descarga: Morada do Cliente

LOCAL DE CARGA: N/ INSTALAÇÕES	LOCAL DE DESCARGA: MORADA DO CLIENTE XXXXXXXXXXXXXXXXXXXXXXXXXXXX	HORA DE CARGA: 10:47	VIATURA:
--------------------------------	--	----------------------	----------

CLIENTE N.º	S/N.º CONTRIBUINTE	ZONA	VEND.	PAGAMENTO		DOCUMENTO		
				CONDIÇÕES	DATA VENCIMENTO	DATA	NÚMERO	SERIE
1233	600080374		1	Pronto Pagamento	2009-03-05	2009-03-05	16842	1

CÓD. ARTIGO	TIPO EMBALAGEM G. REMESSA	DESIGNAÇÃO	QUANTIDADE	PREÇO UNITÁRIO	DESC.		IMPORTÂNCIA	IVA %
					%	P.P.		
0105006	M2	MALHA SOL ( M2 )	60,00	1,25	5		71,25	20

Agrupamento Verificat Escolas de Algoz			
Ano: 2009	Débito Crédito: 023/026 21 21 23		
Registro	N.º Doc	Data	Rúbrica
Diário de Facturas	431	23/03/09	WJWJ
C/Correntes	502 en		
F. Coife			
Caixa			
Trsf. Banc.			
Cheque			
O Conselho Administrativo		Presidente	
		Vice Presidentes	
		Secretário	

INCIDÊNCIA IVA	TAXA	VALOR
71,25	20	14,25

VALOR ILIQUIDO DE MERC.	DESCONTO	DESCONTO P.P.
75,00	3,75	
MERC. SUJEITA A IVA	DIVERSOS	MERCADORIAS ISENTAS
71,25		

SUB-TOTAL
71,25
TOTAL MERCAD. + IVA
€ 85,50

VALOR TOTAL DO IVA: 14,25

Os artigos/serviços foram colocados a disposição do adquirente na data da(s) Guia(s) ou factura

# ANTERO & NEVES, UNIPESSOAL, LDA.

MATERIAIS DE CONSTRUÇÃO CIVIL

TELEF.: 282 57 51 26 - FAX: 282 57 49 53  
ESTRADA DA AMOREIRA - APARTADO 42  
8365-907 ALGOZ

CONTRIBUINTE N.º 500 992 061  
CONS. REGISTO COM. DE SILVES SOB N.º 493  
CAPITAL SOCIAL: 29.927,88 €



AGRUPAMENTOS ESCOLAS DO ALGOZ

ALGOZ  
ALGOZ  
8365

ARMAÇÃO DE PERA

DOCUMENTO

FACTURA

Pag. : 1

Local de Descarga: ALGOZ

LOCAL DE CARGA: N/ INSTALAÇÕES	LOCAL DE DESCARGA: MORADA DO CLIENTE XXXXXXXXXXXXXXXXXXXXXXXXXXXX	HORA DE CARGA: 13:56	VIATURA: 52-93-UT
--------------------------------	--	----------------------	-------------------

CLIENTE N.º	S/N.º CONTRIBUINTE	ZONA	VEND.	PAGAMENTO		DOCUMENTO		
				CONDIÇÕES	DATA VENCIMENTO	DATA	NUMERO	SÉRIE
1233	600080374		1	Pronto Pagamento	2009-02-06	2009-02-06	16748	1

CÓD. ARTIGO	TIPO EMBALAGEM G. REMESSA	DESIGNAÇÃO	QUANTIDADE	PREÇO UNITÁRIO	DESC.		IMPORTÂNCIA	IVA %
					%	p.p.		
BR001.0027816	V/	2009-02-04						
0110003	ML	VIGOTAS B3 ML	9,00	2,97			26,73	20
0102004	M3	AREIA DO AREEIRO CRIVADA ( M3 )	3,00	20,00			60,00	20

Agrupamento Vertical Escolas de Algoz			
Ano: 2009	Subs. Crédito: 023/026212133		
Registo	N.º Doc	Data	Rúbrica
Diário de Facturas	427	23/01/09	MW/LL
CICorrentes	4498 EU		
F. Cofre			
Caixa			
Trsf.º Banc.			
Chèque			
Conselho Administrativo		Presidência	
		Vice Presidência	
		Secundário	

INCIDENCIA IVA	TAXA	VALOR
86,73	20	17,35
<b>VALOR TOTAL DO IVA</b>		<b>17,35</b>

VALOR ILÍQUIDO DE MERC.	DESCONTO	DESCONTO P.P.
86,73		
MERC. SUJEITA A IVA	DIVERSOS	MERCADORIAS ISENTAS
86,73		

SUB-TOTAL
86,73
TOTAL MERCAD. + IVA
€ 104,08

Os artigos/serviços foram colocados a disposição do adquirente na data da(s) Guia(s) ou factura

6

# ANTERO & NEVES, UNIPESSOAL, LDA.



MATERIAIS DE CONSTRUÇÃO CIVIL

TELEF.: 282 57 51 26 - FAX: 282 57 49 53  
ESTRADA DA AMOREIRA - APARTADO 42  
8365-907 ALGOZ

CONTRIBUINTE N.º 500 992 061  
CONS. REGISTO COM. DE SILVES SOB N.º 493  
CAPITAL SOCIAL: 29.927,88 €

AGRUPAMENTOS ESCOLAS DO ALGOZ  
ALGOZ  
ALGOZ  
8365 ARMAÇÃO DE PERA

DOCUMENTO  
FACTURA

Pag. : 1

Local de Descarga: ALGOZ

LOCAL DE CARGA: N/ INSTALAÇÕES	LOCAL DE DESCARGA: MORADA DO CLIENTE XXXXXXXXXXXXXXXXXXXXXXXXXXXX	HORA DE CARGA: 15:02	VIATURA: 52-93-UT
--------------------------------	--	----------------------	-------------------

CLIENTE N.º	S/N.º CONTRIBUINTE	ZONA	VEND.	PAGAMENTO		DOCUMENTO		
				CONDIÇÕES	DATA VENCIMENTO	DATA	NÚMERO	SERIE
1233	600060374		1	Pronto Pagamento	2009-02-13	2009-02-13	16768	1

CÓD. ARTIGO	TIPO EMBALAGEM G. REMESSA	DESIGNAÇÃO	QUANTIDADE	PREÇO UNITÁRIO	DESC.		IMPORTÂNCIA	IVA %
					%	P.P.		
5R001.0027846		2009-02-10						
0101001	Uni	CIMENTO SACO 35 KG	10,00	3,70			37,00	20
0101055	Uni	REBUÇO PRONTO BRANCO EXTERIOR	10,00	3,43			34,30	20

**Agrupamento Vertical Escolas de Algoz**

Ano: 2009	Dentro Crédito: 023/026212133
Registo: 428	N.º Doc: 23/03/09
Diário de Facturas	Data: 23/03/09
Correntes: 49920	Róbriga: [assinatura]
F. Selva	
Calls	
Tráf. Banc.	
Caixas	
Conselho Administrativo	Presidente
	Vice Presidente
	Secretário

INCIDÊNCIA IVA	TAXA	VALOR
71,30	20	14,26
<b>VALOR TOTAL DO IVA</b>		<b>14,26</b>

VALOR LÍQUIDO DE MERC.	DESCONTO	DESCONTO P.P.
71,30		
MERC. SUJEITA A IVA	DIVERSOS	MERCADORIAS ISENTAS
71,30		

SUB-TOTAL
71,30
TOTAL MERCAD. + IVA
€ 85,56

Os artigos/serviços foram colocados a disposição do adquirente, na data da emissão desta factura.

7

# ANTERO & NEVES, UNIPESSOAL, LDA.

MATERIAIS DE CONSTRUÇÃO CIVIL

TELEF: 282 57 51 26 - FAX: 282 57 49 53  
ESTRADA DA AMOREIRA - APARTADO 42  
8365-907 ALGOZ

CONTRIBUINTE N.º 500 992 061  
CONS. REGISTO COM. DE SILVES SOB N.º 493  
CAPITAL SOCIAL: 29.927,88 €



AGRUPAMENTOS ESCOLAS DO ALGOZ

ALGOZ  
ALGOZ  
8365

ARMAÇÃO DE PERA

DOCUMENTO

FACTURA

Pag. : 1

Local de Descarga: ALGOZ

LOCAL DE CARGA: N/ INSTALAÇÕES	LOCAL DE DESCARGA: MORADA DO CLIENTE: *****	HORA DE CARGA: 15:04	VIATURA: 52-93-UT
--------------------------------	---	----------------------	-------------------

CLIENTE N.º	S/N.º CONTRIBUINTE	ZONA	VEND.	PAGAMENTO		DOCUMENTO		
				CONDIÇÕES	DATA VENCIMENTO	DATA	NUMERO	SERIE
1233	600080374		1	Pronto Pagamento	2009-02-20	2009-02-20	16783	1

CÓD. ARTIGO	TIPO EMBALAGEM G. REMESSA	DESIGNAÇÃO	QUANTIDADE	PREÇO UNITARIO	DESC. % P.P.	IMPORTANCIA	IVA %
BR001.0027885	Uni	2009-02-17					
0101056	Uni	REBOCO PRONTO BRANCO EXTERIOR	10,00	3,43		34,30	20
BR001.0027887	Uni	2009-02-18					
0101001	Uni	CIMENTO SACO 35 KG	15,00	3,70		55,50	20
0102004	M3	AREIA DO AREEIRO CRIVADA (M3)	3,00	20,00		60,00	20

Agrupamento Vertical Escolas de Algoz			
Ano	Débitos	023/026212133	
2009	Créditos		
Registro	N.º Doc	Data	Rúbrica
Diário de Faturas	429	23/03/09	WQU
Correntes	50000		
F. Caixa			
Trsf. Banc.			
Chèque			
Conselho Administrativo		Presidente	
		Vice-Presidente	
		Secretário	

INCIDÊNCIA IVA	% TAXA	VALOR
149,80	20	29,96
<b>VALOR TOTAL DO IVA</b>		<b>29,96</b>

VALOR ILÍQUIDO DE MERC.	DESCONTO	DESCONTO P.P.
149,80		
MERC. SUJEITA A IVA	DIVERSOS	MERCADORIAS ISENTAS
149,80		

SUB-TOTAL
149,80
TOTAL MERCAD. + IVA
€ 179,76

Os artigos/serviços foram colocados a disposição do adquirente na data da(s) Guia(s) ou factura